

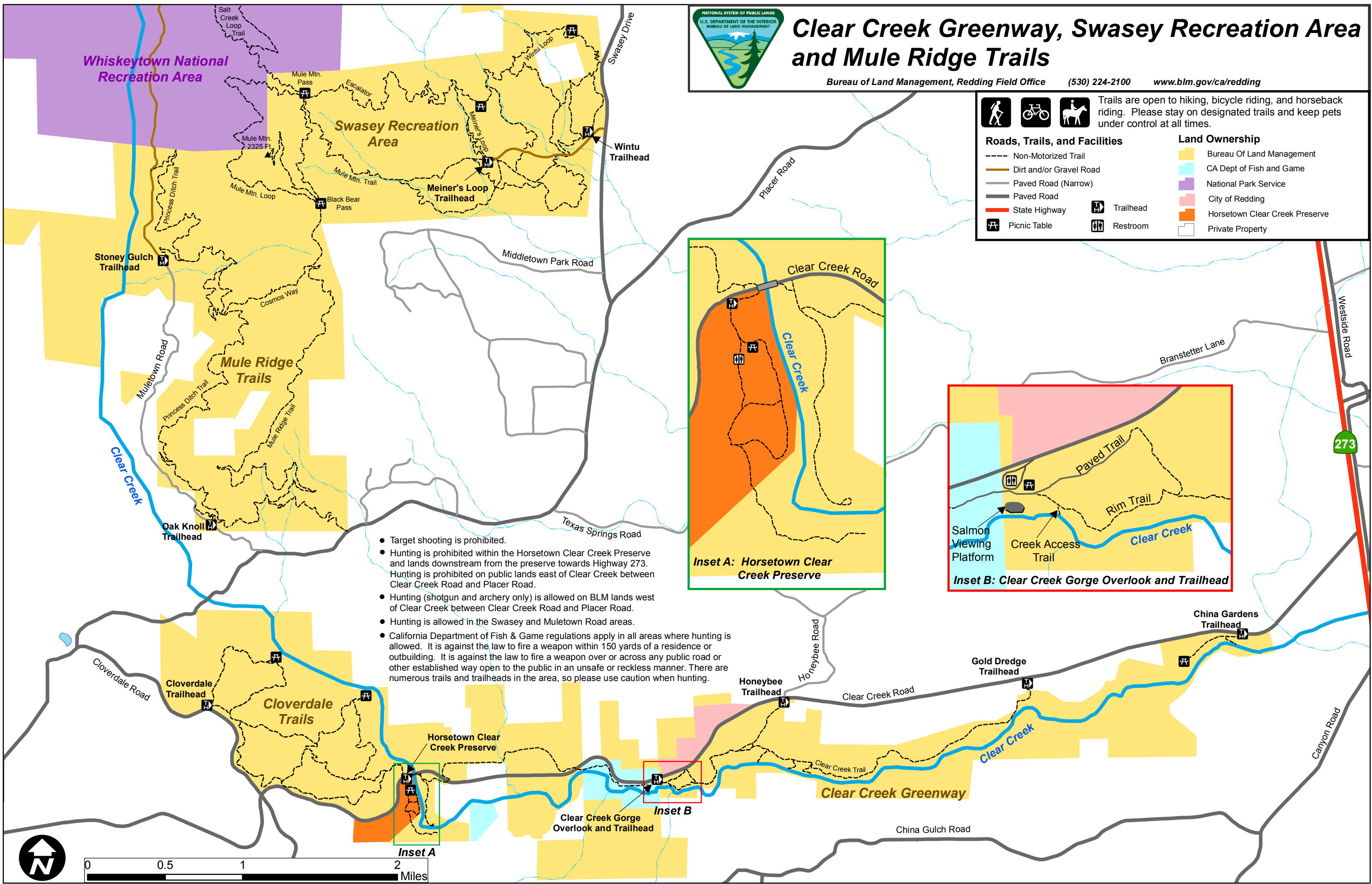


# Clear Creek Greenway, Swasey Recreation Area and Mule Ridge Trails

Bureau of Land Management, Redding Field Office (530) 224-2100 [www.blm.gov/ca/redding](http://www.blm.gov/ca/redding)

Trails are open to hiking, bicycle riding, and horseback riding. Please stay on designated trails and keep pets under control at all times.

Roads, Trails, and Facilities		Land Ownership	
	Non-Motorized Trail		Bureau Of Land Management
	Dirt and/or Gravel Road		CA Dept of Fish and Game
	Paved Road (Narrow)		National Park Service
	Paved Road		City of Redding
	State Highway		Horsetown Clear Creek Preserve
	Picnic Table		Private Property
	Trailhead		
	Restroom		



- Target shooting is prohibited.
- Hunting is prohibited within the Horsetown Clear Creek Preserve and lands downstream from the preserve towards Highway 273. Hunting is prohibited on public lands east of Clear Creek between Clear Creek Road and Placer Road.
- Hunting (shotgun and archery only) is allowed on BLM lands west of Clear Creek between Clear Creek Road and Placer Road.
- Hunting is allowed in the Swasey and Muletown Road areas.
- California Department of Fish & Game regulations apply in all areas where hunting is allowed. It is against the law to fire a weapon within 150 yards of a residence or outbuilding. It is against the law to fire a weapon over or across any public road or other established way open to the public in an unsafe or reckless manner. There are numerous trails and trailheads in the area, so please use caution when hunting.

