



Rock Creek - Middle Creek Trail System

Bureau of Land Management, Redding Field Office (530) 224-2100 www.blm.gov/ca/redding



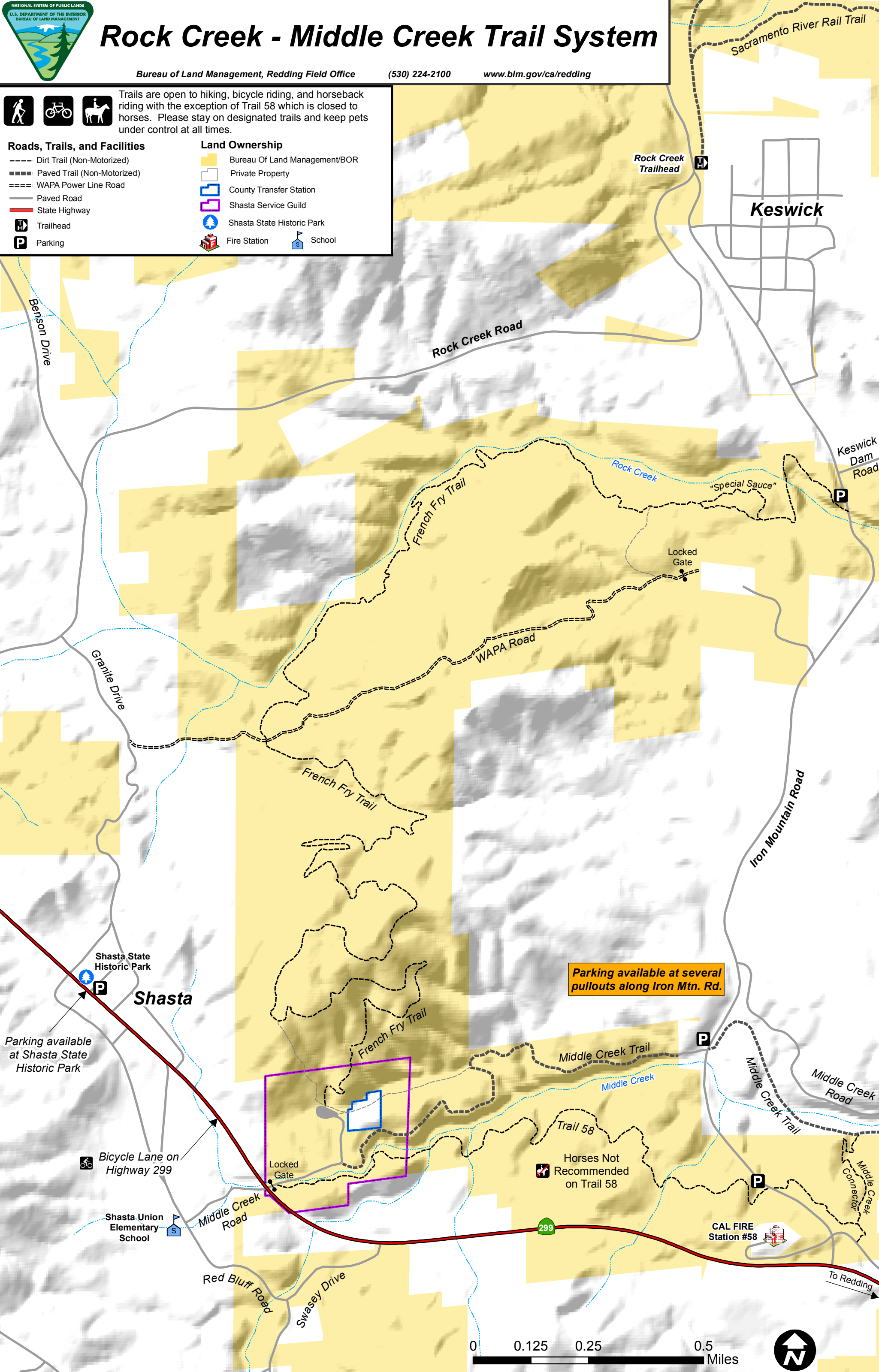
Trails are open to hiking, bicycle riding, and horseback riding with the exception of Trail 58 which is closed to horses. Please stay on designated trails and keep pets under control at all times.

Roads, Trails, and Facilities

- Dirt Trail (Non-Motorized)
- ===== Paved Trail (Non-Motorized)
- ===== WAPA Power Line Road
- Paved Road
- State Highway
- Trailhead
- Parking

Land Ownership

- Bureau Of Land Management/BOR
- Private Property
- County Transfer Station
- Shasta Service Guild
- Shasta State Historic Park
- Fire Station
- School



Parking available at several pullouts along Iron Mtn. Rd.

Parking available at Shasta State Historic Park

Bicycle Lane on Highway 299

Shasta Union Elementary School

Horses Not Recommended on Trail 58

CAL FIRE Station #58

To Redding