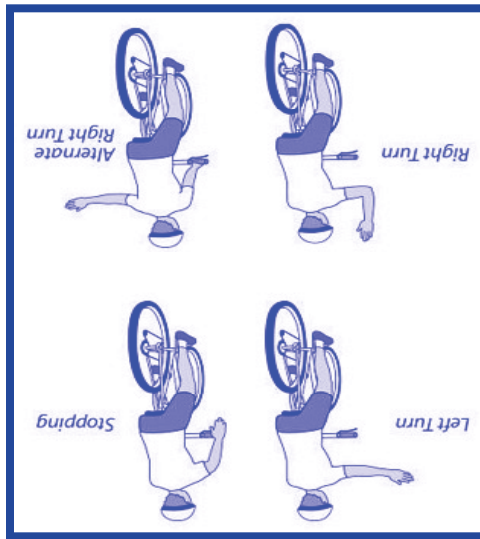


1. It is illegal to use a cell phone or to send text messages while operating a motor vehicle.
2. Follow posted speed limits.
3. Always look out for bicyclists and pedestrians.

Drivers Safety Tips



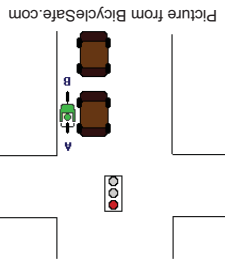
1. Make eye contact with drivers.
2. Be respectful of others' property (yards, cars, toys, plants).
3. Look left, right, and left again before crossing the street.
4. Walk with a friend or in a group.
5. If you feel you are in danger, run away and make as much noise as you can.
6. Be aware of your surroundings.
7. Do not wear headphones. You need to hear oncoming traffic and emergency vehicles.



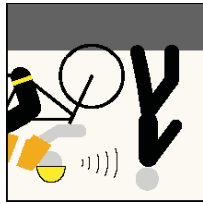
Bicycle Hand Signals



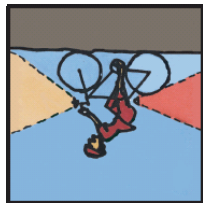
1. Cross the street at intersections or crosswalks.
2. Don't walk on train tracks.
3. Walk on the correct side of the road, always facing traffic.



Traffic laws apply to persons riding bicycles. Obey all traffic signs, signals and laws. Ride in the same direction as traffic.



Be courteous. Call out to pedestrians as you approach. Yield to pedestrians in the crosswalk.



Be visible day or night. Wear bright clothes. At night you should have a headlight and taillight or red rear reflector. It's the law.

1. Always wear a helmet. It's the law.
2. Always ride in the bike lane when one is available.
3. Ride on the correct side of the road, always with traffic.
4. Lock your bike when you are not using it.
5. Use hand signals when turning.

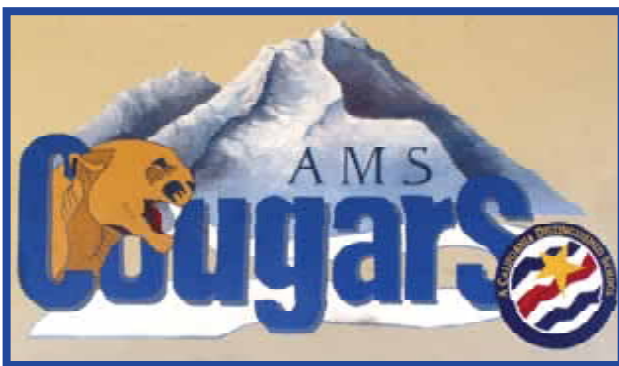
Bicyclists Safety Tips

Pedestrians (Walkers) Safety Tips

General Safety Tips

Brochure Highlights

- Walking and biking routes to school and landmarks.
- Locations of sidewalks, signals, bike lanes and crosswalks.
- Bicycle, pedestrian and general safety tips.
- Bicycle hand signals.



"All of us from Anderson Middle School hope that you will use this safety guide to be safe in our community."

Mrs. Dillstrom's elective class Spring 2010

"The Safe Routes to School project has been instrumental and educational in the students learning first hand the process of how to assess safer routes to school, speak publicly and develop a safety guide for all students and residents in the Anderson community."

*Jason Provence,
Assistant Principal,
Anderson Middle School*

How You Can Get Involved

- Encourage youth to walk and bike to school.
- Coordinate and promote Walk to School Day.
- Try using Mill Street as a drop-off and pick-up site, it's safer and quicker!
- Be a role model by walking and biking in your neighborhood.

For more information contact:
Barbara Jackson, 378-6060 or
Christine Haggard, 225-3763

Safe Routes to School Partners



Cougar Tracks, Anderson Safety Guide highlights safer routes in the area. Pedestrians and cyclists must make their own evaluation of traffic and road conditions and plan routes appropriate to conditions and to their skills. Cascade Union Elementary School District, Anderson Middle School, the County of Shasta, the City of Anderson, Anderson Partnership for Healthy Children and HEAC do not endorse or assume responsibility or liability for the condition of any of the traffic or road locations described in this guide.

COUGAR TRACKS Anderson Safety Guide and Map



**Safe Routes to School Project
with
Anderson Middle School**

ANDERSON MIDDLE SCHOOL Cougar Tracks Map



Point of Interest Key	
#	= Point of Interest
1	= Cascade School District Office
2	= Trinity Methodist Church
3	= City Hall
4	= Fire Dept.
5	= T.J.'s Drive-In
6	= Teen Center
7	= Library
8	= New Tech High School
9	= Post Office
10	= Police Dept.
11	= Chamber of Commerce
12	= Fairgrounds
13	= Safeway-Gateway Plaza
14	= Meadowlane Elementary
15	= Anderson Union High
16	= Skate Park
17	= Volonte Park
18	= Anderson Heights Elem.
19	= Factory Outlets
20	= Wal-Mart

Legend	
	= Anderson Middle School
	= Sidewalk - both sides of street
	= Sidewalk - one side of street
	= Crosswalk
	= Bikeline
	= Highway or Interstate
	= Traffic Signal
	= Railroad Track
	= Walking Path
	= Anderson Bikeway
	= Bus Stop

Call 378-7015 for more information

Map created April 1, 2010

One Mile from School



Sidewalk and Bikeline Goes to Riverside Ave.

To Verde Vale School Three-Quarters of a Mile

To Anderson River Park Half a Mile

Half Mile from School