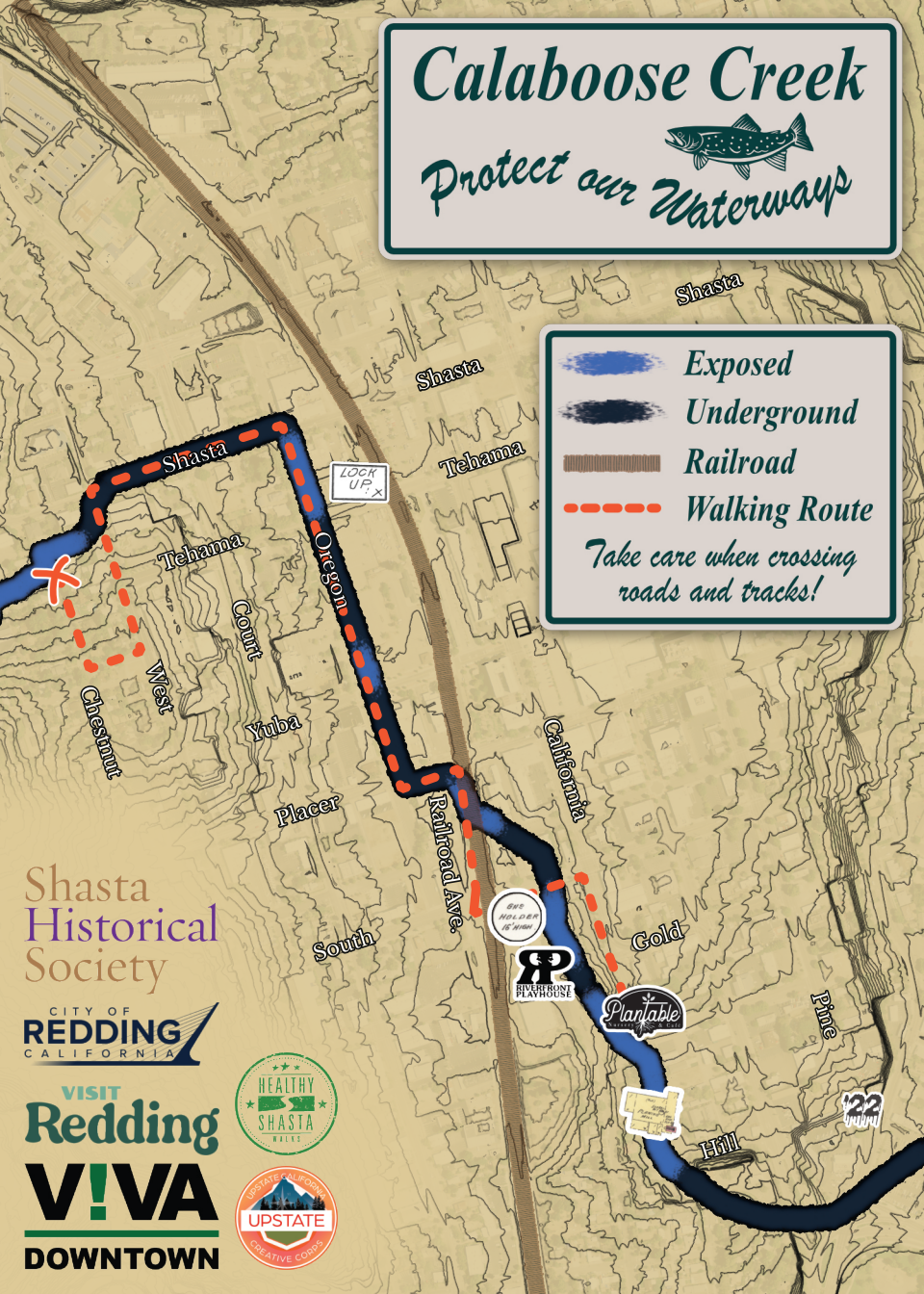


Calaboose Creek

Protect our  Waterways



-  Exposed
-  Underground
-  Railroad
-  Walking Route

*Take care when crossing
roads and tracks!*

Shasta
Historical
Society

CITY OF
REDDING
CALIFORNIA

VISIT
Redding
V!VA
DOWNTOWN




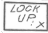
Downtown Redding

A Walk along Calaboose Creek





Calaboose Creek is a 2.6-mile seasonal creek that begins in the catch basin of the Benton Airport runway protection zone. Gathering strength as it passes through the Magnolia neighborhood (where it can be viewed at Olive, Orange, and Magnolia Streets between Shasta and Butte), it runs through Downtown Redding and out to the Sacramento River, just north of the Cypress Bridge.


The creek has been integral to the city's history. Besides its traditional uses as a source of water and wildlife habitat, it once served as the city sewer. While most of the creek's course has been covered over the last century, there are still numerous spots to observe it and the natural habitat it creates. You may be surprised to learn they are all part of the same creek.

At the north end of Chestnut Street,  watch the creek flow through the concrete channel where it continues to create its own riparian habitat. It ducks underground beneath the office complex just to the east, so take a walk down the north side of Shasta Street directly over the creek's original course.

Turn right down Oregon Street and watch the creek pop out for a block. When flowing, you will often find mallards and other native waterfowl. The creek bed is always rich with cattails and flowers. This block was once the site  of the original "lock-up" for the town, colloquially labeled a "calaboose," and is the creek's namesake.

Walk along Oregon Street over the creek for a few blocks. It pops out briefly at the Yuba intersection before diving back down under the Post Office. It emerges briefly again near the railroad behind Gerlinger Steel, which it passes under.

On the south side of South Street, the creek runs in essentially its original course. This spot  was once the location of Redding Gas Works, a facility that fractured coal for methane gas. Follow the creek past Riverfront Playhouse  into the gorge behind Plantable,  a nursery and cafe which cares for the creek. Just before the creek enters its longest underground course, note the location of the old planing mill. 

After this point, the creek runs underneath Pine street. In 2022, jet fuel spilled here  and entered the creek via storm drains. The spill was carried out to the Sacramento River, where it was contained and removed.

Designed April 2024 by Tyler Brown Cifu Shuster
Additional research by the Shasta Historical Society
and Michael Kuker

